

Custom moulded rubber products



Design: We develop moulded rubber parts such as sleeves, membranes, bellows, profiles, hoses or seals together with you for your special application or manufacture them individually according to your specifications.

Due to our comprehensive knowledge and because of our vulcanisation possibilities, we are specialised in the production of large-volume moulded rubber parts. We are your ideal partner for one-off and small batch production, especially when it comes to special requirements for the rubber material, the geometry of the moulded part or precision. We process all types of commercially available elastomers, can reinforce them with fabrics or also combine them with PTFE or metals.

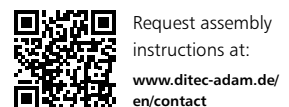
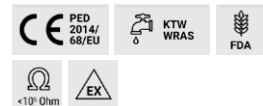
The required moulds are economically produced from a wide range of materials on modern CNC machines in our pattern shop.

Dimensions: Custom size, length and forms














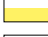
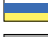




Thickness: Custom thickness and inserts on request

Pressure: Up to 100 bar depending on design and dimensions

Application:
We supply in all areas of mechanical and plant engineering, rail vehicle construction, energy and handling technology as well as agricultural, food and textile industry and environmental technology



Elastomers and reinforcements

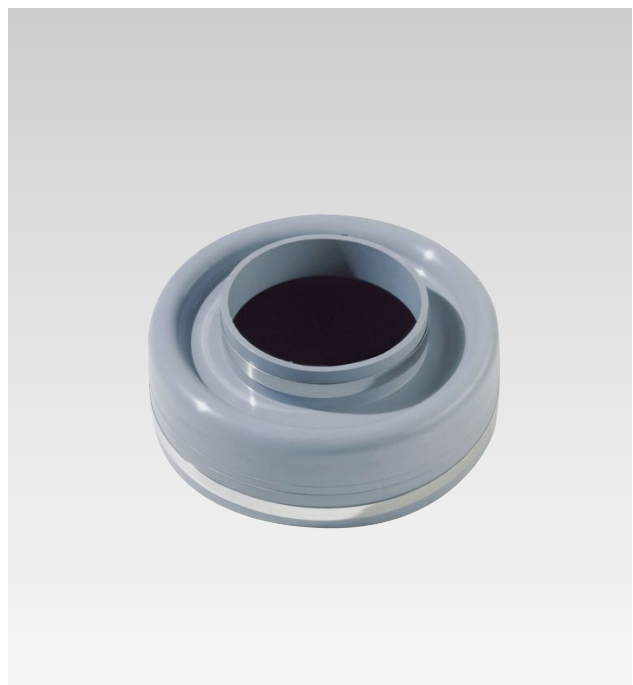
| Elastomer | Fabric | Marking | °C | Application |
|-----------|-----------------|---|------------|--|
| EPDM | Polyamid |  | -40 +100 | Cooling water, hot water, seawater, acids, dilute chlorine compounds |
| EPDM | Aramid |  | -40 +100 | Cooling water, hot water, seawater, acids, dilute chlorine compounds |
| EPDMht | Aramid |  | -40 +120 | Cooling water, hot water, seawater, acids, dilute chlorine compounds |
| EPDMwras | Polyamid |  | -40 +100 | Drinking water, foodstuffs |
| EPDMwras | Aramid |  | -40 +100 | Drinking water, foodstuffs |
| EPDMbeige | Polyamid |  | -40 +100 | Foodstuffs |
| EPDMbeige | Aramid |  | -40 +100 | Foodstuffs |
| IIR | Polyamid |  | -20 +100 | Hot water, acids, bases, gases |
| IIR | Aramid |  | -20 +100 | Hot water, acids, bases, gases |
| CSM | Polyamid |  | -20 +100 | Strong acids, bases, chemicals |
| CSM | Aramid |  | -20 +100 | Strong acids, bases, chemicals |
| NBR | Polyamid |  | -30 +100 | Oils, petrol, solvents, compressed air |
| NBR | Aramid |  | -30 +100 | Oils, petrol, solvents, compressed air |
| NBRbeige | Polyamid |  | -30 +100 | Oil, fatty foods |
| NBRbeige | Aramid |  | -30 +100 | Oil, fatty foods |
| CR | Polyamid |  | -20 +90 | Cooling water, slightly oily water, seawater |
| CR | Aramid |  | -20 +90 | Cooling water, slightly oily water, seawater |
| FPM | Aramid |  | -20 +180 | Corrosive chemicals, petroleum distillates |
| FPMbeige | Aramid |  | -20 +180 | Oil, fatty foods |
| NR | Polyamid | | -20 +70 | Abrasive materials |
| Silicon | Aramid Glass | | -60 +200 | Air, saltwater atmosphere, foodstuffs, medical technology |

PTFE lamination: one- or both-sided alternatively available

Rubber elements



Silicone rubber seal vulcanized to foam rubber for a cheese lifter



Wall seal

346 Rubber moulded parts



Inflation bellows



Expansion bellows



Ring gap seal with hexagonal penetration



Silicon ring gap seal



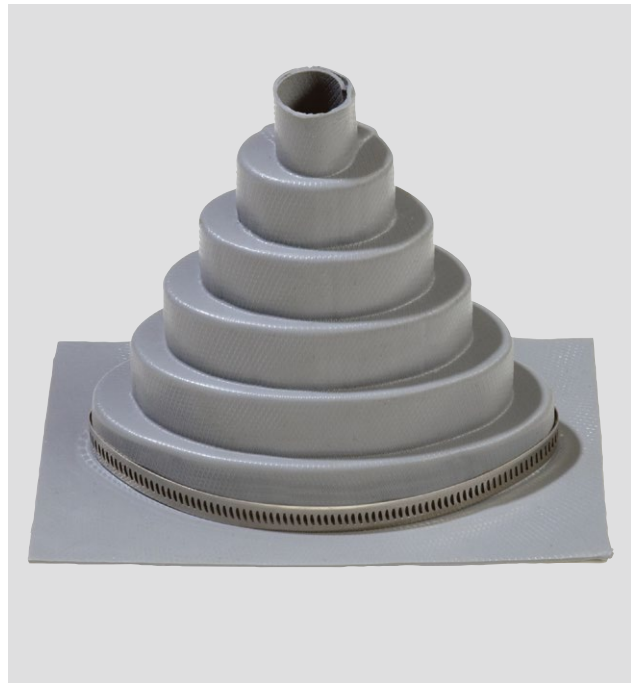
Rubber bend in pressure test
 \varnothing 100 mm, 40 bar



Double-walled expansion joint in a coal pulveriser with a connection for a leak sensor
 \varnothing 250 - 140 mm



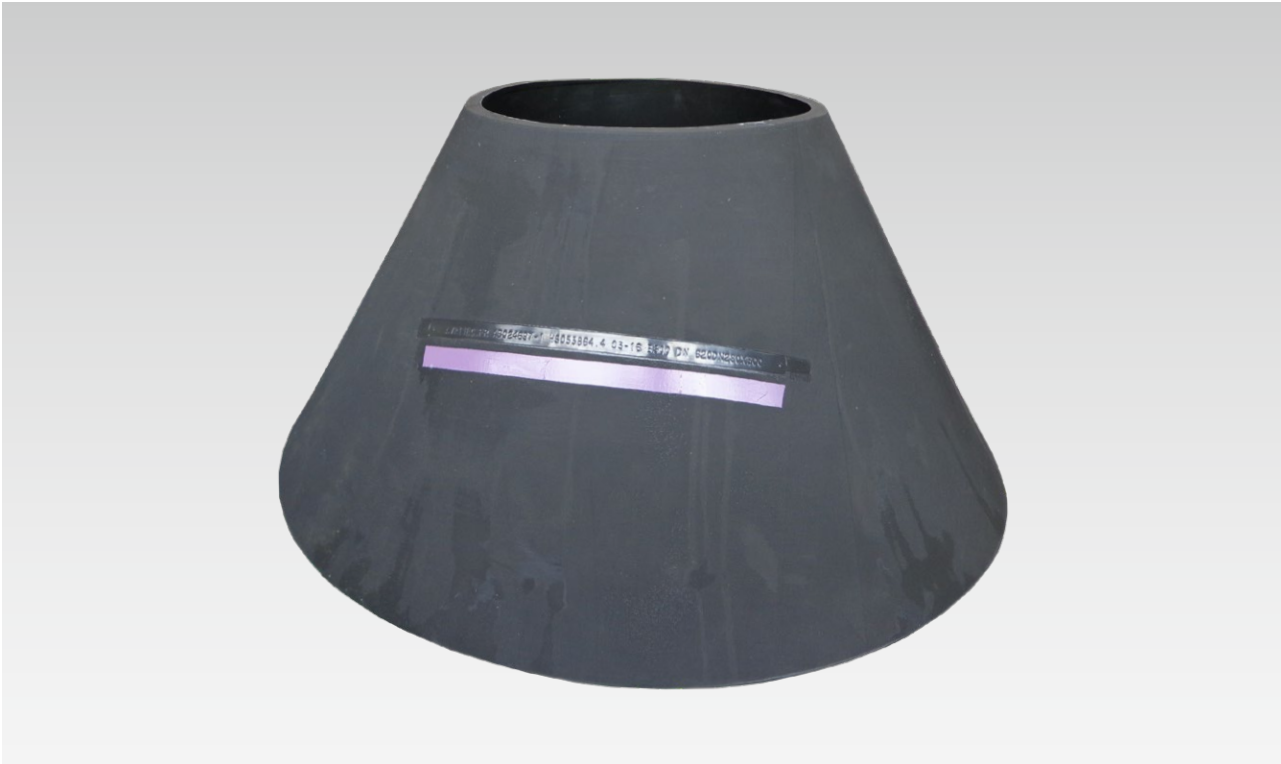
Conical adapter with embedded flange
 and internal rubber coated flange tube



Expansion bellows, oval, as actuating rod protection



FPM rubber cone from round to rectangular, with stainless steel flow liner
test pressure 2,5 bar



FPM rubber cone



Cheese lifter rubber bumper